

# Nature-based solutions for climate-resilient cities: digital tools for decision-makers

## Climate Adaptation Platforms Community of Practice

Andreas Hoy, Rosie Witton and Sukaina Bharwani, SEI Tallinn and SEI Oxford  
22<sup>nd</sup> May 2025



Funded by  
the European Union



# Agenda

**Welcome, Andreas Hoy, Rosie Witton (5 min.)**

**Adaptation AGORA Project and Quiz, Andreas Hoy (5 min.)**

**Urban Governance Atlas, Natalia Burgos Cuevas (20 min. incl. Q&A)**

**AdaptaVille, Anna Blouet (20 min. incl. Q&A)**

**Plus Fraiche Ma Ville, Tanguy de Ferrières (20 min. incl. Q&A)**

**Panel Discussion, All presenters (15 min.)**

**Closing Remarks, Andreas Hoy (5 min.)**

# What is the Adaptation AGORA project?

## Adaptation AGORA - A Gathering place to cO-design and co-cReate Adaptation

Adaptation AGORA supports the overall objectives of the Mission on Adaptation to Climate Change to meaningfully and **effectively engage communities and regions** in climate actions, accelerating and upscaling adaptation process for building a climate resilient Europe.

January 2023 – December 2025







# Urban Governance Atlas

***Natalia Burgos Cuevas***

***Ecologic Institute, Berlin***







**INTERLACE**

RESTORING URBAN ECOSYSTEMS  
RECUPERANDO ECOSISTEMAS URBANOS

# Urban Governance Atlas

## *Policy Pathways for mainstreaming Nature-based Solutions in cities*

Natalia Burgos Cuevas  
Ecologic Institute

May 22, 2025

[interlace-project.eu](https://interlace-project.eu)



This project has received funding from the European Union's Horizon 2020 research and innovation programme under grant agreement No.869324.



@pixabay



# Creating enabling conditions: Unpacking NBS policy frameworks

- Ambition to mainstream NBS into urban planning and policies
- Policy instruments /governance as critical enablers or barriers to adoption
- Shift from ,government‘ to ,governance‘
- Lack of specific and proven local policy instrument examples ... *until now!*



# Urban Governance Atlas (UGA)

A collection of more than **250 policy instruments** supporting nature-based solutions and ecosystem restoration



Aims to:

- Foster **ecologically coherent, inclusive planning** for urban ecosystem restoration and green space planning
- **Inspire global action** through good practice instruments, including lessons learned
- Represent **diverse contexts** (institutional/geographic) – bottom up & top down

**Easily searchable by different criteria!**



# UGA functionalities

## Multiple ways to search

- Filter by:
  - Keyword search
  - Instrument type + instrument pages
  - Country, city and region
  - Initiating body
  - Targeted urban area
  - Urban challenges addressed
- Interactive map view
- Multilingual Access: English and Spanish

**REGION**

**TARGETED URBAN AREA**

**TYPE OF INSTRUMENT**

**INITIATING BODY**

**CHALLENGES ADDRESSED**





# UGA functionalities

## Instrument pages

### •Objectives & Context

- Aims and challenges addressed
- Link to NBS and ecosystem restoration
- Relevance to specific (peri-)urban areas

### •Governance & Implementation

- Initiating body and instrument design
- Targeted actors and implementation approach

### •Financing

- Funding sources and budget
- Additional financing details

### •Results & Evaluation

- Achieved outcomes and impacts
- Monitoring and evaluation mechanisms

### •Insights & Integration

- Good practice characteristics
- Success factors and lessons learned
- Integration into broader policy frameworks
- Related instruments

### •References

- Data sources and interview references

## The London Urban Forest Partnership

EN ES



The London Urban Forest Partnership launched in 2020 as a city-wide network of organisations that collaborate to protect, manage and enhance the UK capital's trees and woodlands. The partnership is comprised of organisations with a strategic interest in London's trees and woodlands and includes representatives of public and private sector as well as charities. The partnership meets quarterly to share information and data, help inform tree related programmes in London and promote the benefits of the city's urban forest. In 2020, the partnership published a London Urban Forest Plan which sets out its priorities for action and provides the framework to guide the work of the partnership.

OVERVIEW

GOVERNANCE

FINANCING

MONITORING, EVALUATION AND IMPACTS

SOURCES AND FURTHER INFORMATION

REGION:  
EU

COUNTRY:  
United Kingdom

CITY:  
London

CITY POPULATION:  
8,982,000

TIMELINE:  
2020

LAST UPDATED:  
6 Sep 2023

In a nutshell...

# Urban Governance Atlas (UGA)

A collection of more than **250 policy instruments** supporting nature-based solutions and ecosystem restoration

**250**  
good practice  
policy  
instruments

Co-created  
by more than  
**48**  
Organisations

Featuring  
examples from  
**41**  
countries

& Available in  
**English**  
**Spanish**

**4** instrument  
types:

1



**Legislative, regulatory, strategic:**  
usually binding laws and regulations as well as strategies that set visions and strategic goals – overall: **47% of all instruments**

2



**Agreement-based or cooperative:**  
instruments in which the government and/or involved actors jointly and on a voluntary basis decide to behave in a certain way – overall: **23% of all instruments**

3



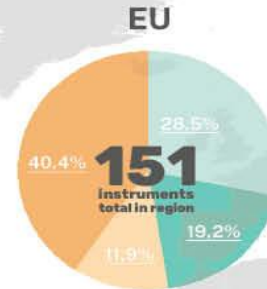
**Economic and fiscal:**  
instruments that influence market mechanisms through for instance disincentives, incentives, payments, subsidies, financing mechanisms and market-based instruments – overall: **18% of all instruments**

4

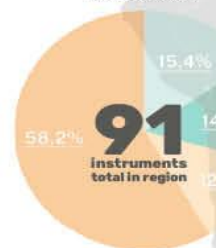


**Knowledge, communication and innovation:**  
try to influence behavior by disseminating information to actors or involving actors in critical processes in innovative ways to inspire voluntary behavioral changes – overall: **12% of all instruments**

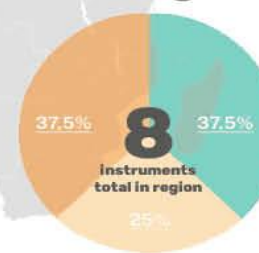
- Agreement-based or cooperative instrument
- Economic and fiscal instruments
- Knowledge, communication and innovation instruments
- Legislative, regulatory and strategic instruments



**CELAC\***  
\*(Community of Latin American and Caribbean States)



**Other regions**



<https://www.interlace-project.eu/>  
<https://interlace-hub.com/>

Find out more about the methodology, findings, and how to contribute a new policy instrument at:





Category	Subcategory	Examples
Legislative, regulatory and strategic instruments (LRSI)	dedicated strategy or plan	NbS, green infrastructure, or green space strategy or plan
	sectoral or overarching strategy or plan	adaptation, biodiversity, circular city, smart city strategy or plan; masterplan; integrated plans
	urban planning mechanisms	spatial (zoning), infrastructure or socio-economic development plans; green space factor restrictions on development of green areas; scoring; land use plans
	standards	green public procurement standards
Knowledge, communication and innovation instruments (KCII)	communication / awareness raising	targeted educational programs; certification (labelling) or ranking; awareness raising campaigns
	knowledge and innovation	communities of practice; living labs; creating workshops; pilots; constructing business cases
Economic and fiscal instruments (EFI)	disincentives	taxes and charges/fees, tariffs; trading of permits for using a resource or trading
	payments, subsidies, incentives	subsidies or payments to landowners/ private actors for practices; public financing/grants
	financing mechanisms / market-based instruments	'green finance' or debt-based instruments; payments for ecosystem services (PES); public-private-partnerships (PPP)
Agreement-based or cooperative instruments (AbCI)	direct engagement of citizens / multistakeholder collaboration	citizen science programmes, participatory budgets, neighbourhood development plans, community management of green spaces on public lands, community asset transfer
	joint regional planning/ action	inter-municipal exchange platforms

# Examples of policy instruments supporting participation and/or co-governance

## Legislative, regulatory, and strategic



Paraná's Water Basin Committees

The city of Paraná is the capital of the Entre Ríos province in Argentina and located on the eastern shore of the Paraná River. As a...

## Economic & fiscal



### Participatory Budget - Wrocław

The city of Wrocław, Poland has been running a participatory budgeting program (Wrocławski Budżet Obywatelski) since 2013. Participatory...

## Agreement-based or cooperative



### Public-community agreement between the Urban Forest Network and the Mayor's Office of Cali, Colombia

The agreement is created for the generation of knowledge that contributes to key decision-making processes for environmental management in...

## Knowledge, communication & innovation



### "Strasbourg grows" educational materials and awareness raising - Strasbourg

Launched in 2017, the "Strasbourg grows" programme ("Strasbourg ça pousse") supports residents in urban greening/...



# Showcasing 4 types of policy instruments



## Knowledge, communication and innovation:

try to influence behavior by disseminating information to actors or involving actors in critical processes in innovative ways to inspire voluntary behavioral changes – overall: 12% of all instruments



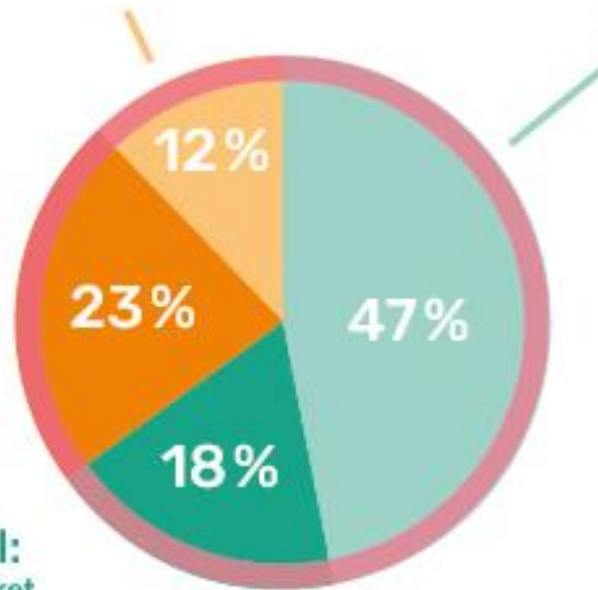
## Agreement-based or cooperative:

instruments in which the government and/or involved actors jointly and on a voluntary basis decide to behave in a certain way – overall: 23% of all instruments

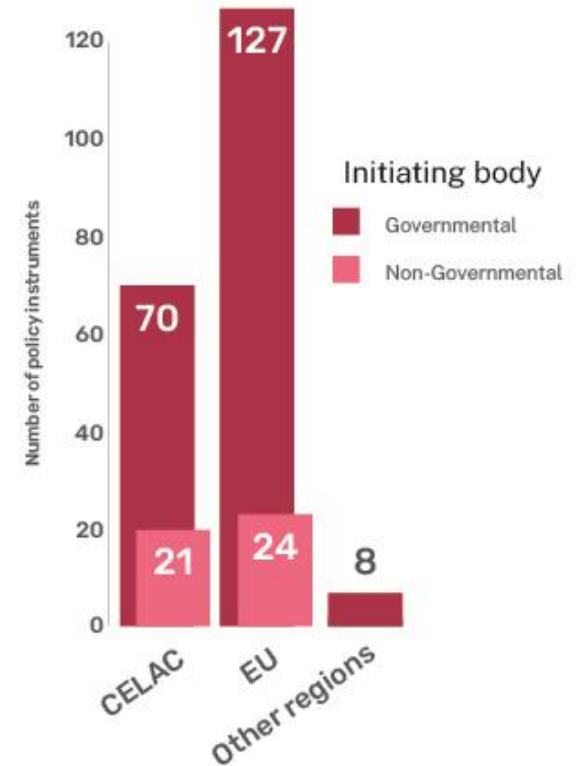


## Economic and fiscal:

instruments that influence market mechanisms through for instance disincentives, incentives, payments, subsidies, financing mechanisms and market-based instruments – overall: 18% of all instruments

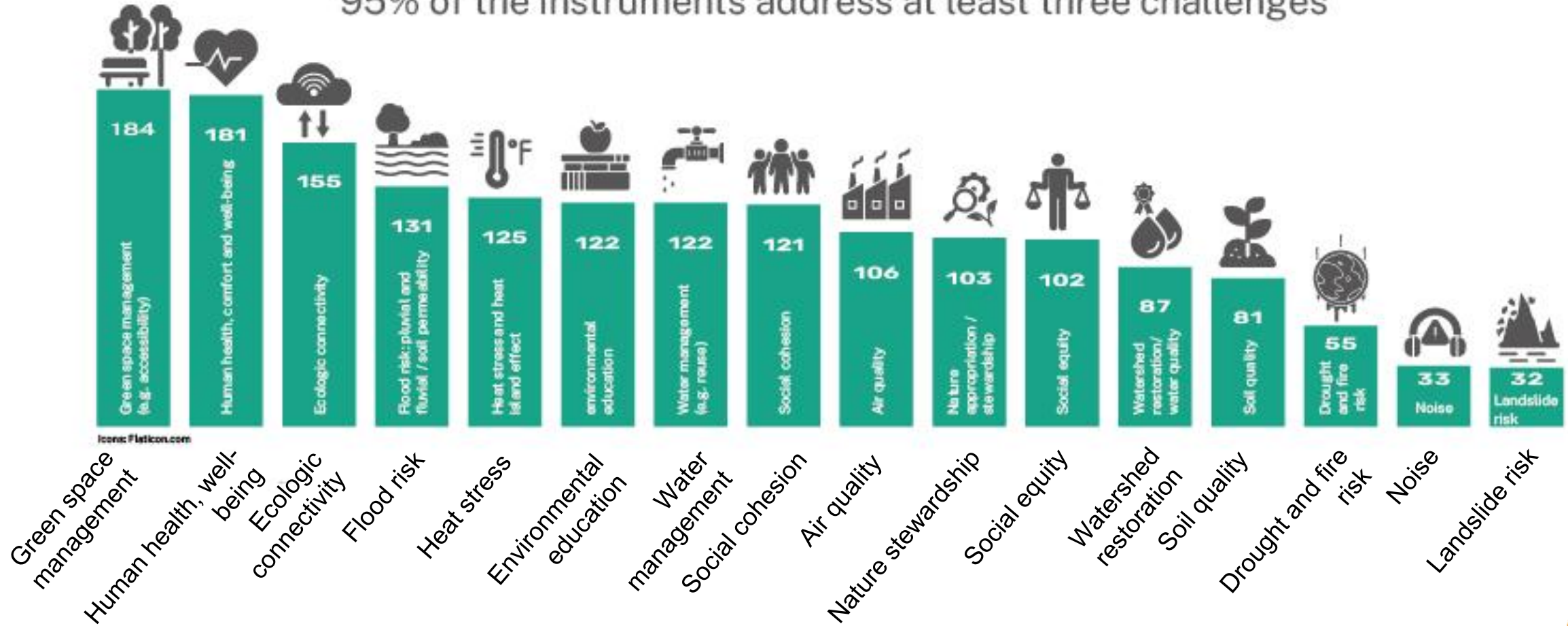


Global distribution and initiating body



## Challenges addressed

95% of the instruments address at least three challenges





## *Some final reflections...*

### **Rich information enabling multifaceted analysis:**

Deeper insights possible by analyzing governance, finance, innovation, and inclusivity dimensions.

- Most policy instruments are top-down (legislative, regulatory, strategic), leaving room for more bottom-up approaches.
- High potential to combine tools, especially communication, innovation, and cooperative mechanisms.

- Provides a framework to analyze policy instruments and how they integrate NBS and ecosystem restoration
- Provides inspiring examples on how to move towards more inclusive NBS action and justice outcomes
- Highlights the diversity of instruments and their application across contexts
- Supports cross-regional learning by showcasing innovative responses to similar challenges



### ***Personal lessons learned***

- It's both a technical and leadership task: build trust, offer guidance, and make time to be available
- Design matters—bring in creative minds, as it's often underestimated
- Reviewing practices takes time and commitment—don't underestimate it! It's hard to keep the momentum, but I'm so glad to be here sharing this with you!

# Dive into the UGA

## Urban Governance Atlas



## ***Further resources***

- Davis, M., Burgos Cuevas, N., and Gvein, M.H. (2024). "Transforming ambition into action to catalyse nature-based solutions: Insights from 250 good practice policy instruments." *Nature-Based Solutions*, 6, p. 100171. doi:10.1016/j.nbsj.2024.100171.

Contact:

Natalia Burgos Cuevas

[natalia.burgoscuevas@ecologic.eu](mailto:natalia.burgoscuevas@ecologic.eu)

McKenna Davis

[mckenna.davis@ecologic.eu](mailto:mckenna.davis@ecologic.eu)





[mckenna.davis@ecologic.eu](mailto:mckenna.davis@ecologic.eu)

[natalia.burgoscuevas@ecologic.eu](mailto:natalia.burgoscuevas@ecologic.eu)

[interlace-project.eu](https://interlace-project.eu)

<https://interlace-hub.com/urban-governance-atlas>



This project has received funding from the European Union's Horizon 2020 research and innovation programme under grant agreement No. 869324.







# AdaptaVille

*Anna Blouet*

*Agence Parisienne du Climat*

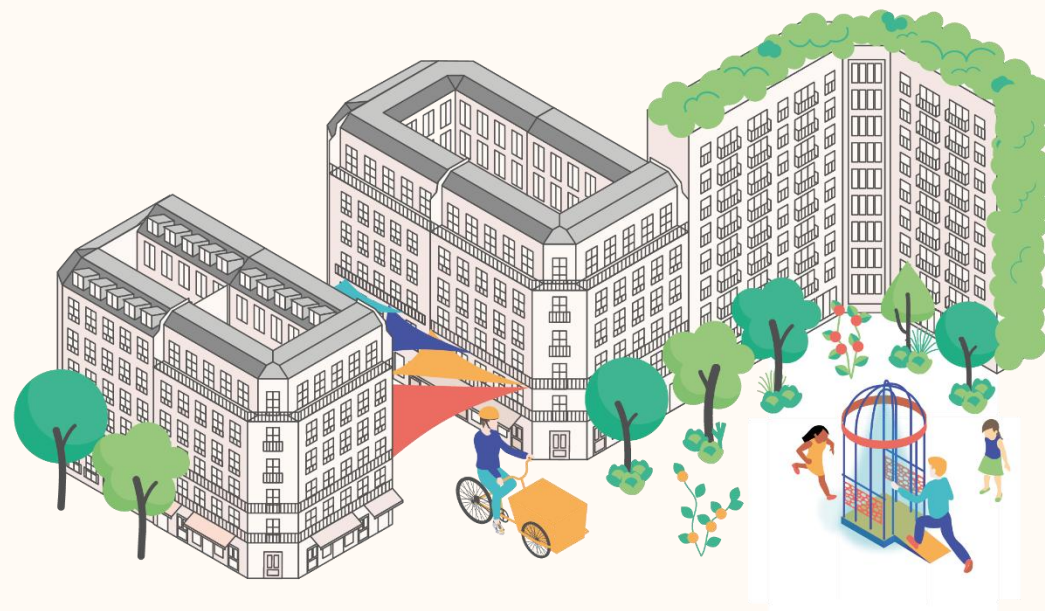






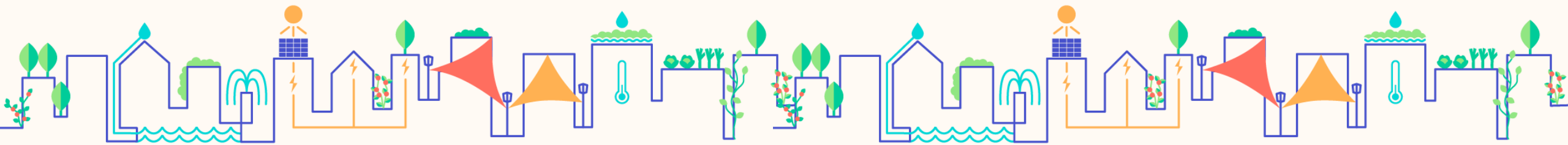
# ADAPTAVILLE

## AdaptaVille A tool to facilitate the adaptation of Île-de- France cities



**Anna Blouet**

Project Manager for Climate Change Adaptation  
Agence Parisienne du Climat



# L'Agence Parisienne du Climat

- The operational agency for the implementation of the climate plan in Paris and Métropole du Grand Paris
- As the single entry point for energy renovation in Paris, it is part of the France Rénov' network.
- Numerous actions address environmental challenges in dense urban areas, buildings, and energy—focusing on both mitigation and adaptation to climate change.

→ [www.apc-paris.com](http://www.apc-paris.com)





# AdaptaVille : A local and collective support program for professionals

- Equip stakeholders to address the impacts of climate change
- Support the structuring of the adaptation sector
- Showcase adaptation solutions to inspire action

Conçu en partenariat avec



et avec le soutien de



teddif



Canicules



Fortes précipitations



Inondations



Risques pour la  
biodiversité



Risques sanitaires



Sécheresses



Tensions sur les  
ressources  
alimentaires



Tensions sur les  
ressources  
énergétiques

# How we identify and showcase solutions

- **Selection** of solutions via an annual selection committee
- **Interviews** and **research** to gather practical information and **feedback**
- Solutions promoted as **solution sheets** on our web platform or during events

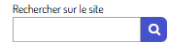
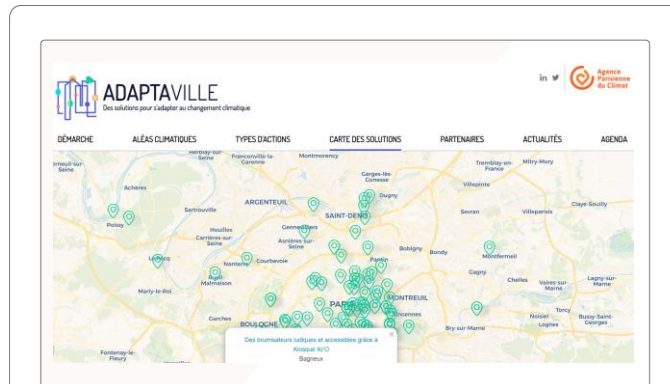


Désimperméabiliser la voirie : les pavés perméables (enherbés, à larges joints, en béton perméable, ...)



# Sharing solutions and local news

- 80+ solution sheets on risks affecting the region (heatwaves, floods, droughts, etc.)
- An interactive map of case studies
- Contacts of over 100 solution providers, including 80 companies ready to answer queries
- Local financial aid sheets
- Articles, guides, and publications
- A local event calendar
- A quarterly newsletter sharing resources, news, and events



ALÉAS CLIMATIQUES TYPES D' ACTIONS CARTE DES SOLUTIONS AIDES FINANCIÈRES LOCALES ACTUALITÉS RESSOURCES AGENDA

Accueil > Aléas climatiques > Canicules

## Canicules

### S'adapter à des vagues de chaleur plus fréquentes et plus intenses

L'augmentation des vagues de chaleur et des canicules, en fréquence et en intensité, est une des conséquences du changement climatique les plus impactantes pour le territoire du Grand Paris.

Selon Météo-France, le nombre de jours de vagues de chaleur en France pourrait doubler d'ici la fin du siècle dans un scénario optimiste, voire être multipliés par un facteur 5 à 10 dans un scénario pessimiste. Ces vagues de chaleur ont des conséquences sanitaires graves et quasi systématiques, allant jusqu'à une augmentation de la mortalité dans les départements touchés.

En ville, les vagues de chaleur sont exacerbées par l'effet d'îlot de chaleur urbain, qui entraîne une incapacité pour la ville à se rafraîchir la nuit. Les revêtements minéraux, la morphologie urbaine, l'absence de végétation sont autant de facteurs qui entraînent une différence de température pouvant aller jusqu'à 10 °C entre les centres urbains et les zones rurales alentours.



Canicules



Fortes précipitations



Inondations



Risques pour la biodiversité



Risques sanitaires



Sécheresses



Tensions sur les ressources alimentaires



Tensions sur les ressources énergétiques



Proposer des aides aux particuliers pour accompagner la végétalisation des espaces privés

Certaines collectivités ont mis en place des dispositifs d'aide et d'accompagnement auprès de...



Installer des solutions d'ombrage en ville

En générant de l'ombre, les pergolas, voiles d'ombrage, ou autres types d'ombrières agissent...



Installer des protections solaires mobiles extérieures (stores, volets, persiennes, ...)

Les volets et stores constituent de véritables atouts pour le confort d'été, surtout...

# Thematic publications



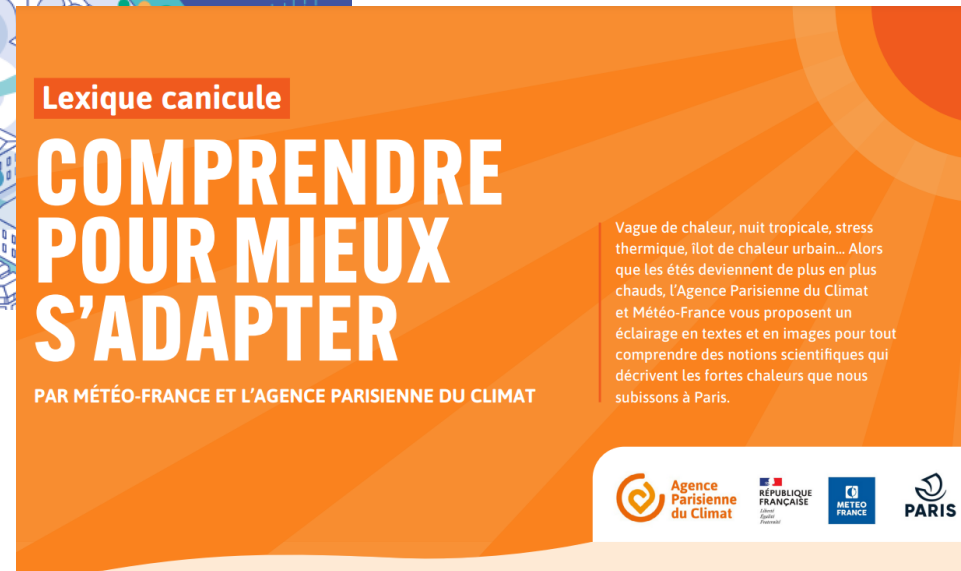
Shading



Pavement materials



Flooding



Heatwaves

Vague de chaleur, nuit tropicale, stress thermique, îlot de chaleur urbain... Alors que les étés deviennent de plus en plus chauds, l'Agence Parisienne du Climat et Météo-France vous proposent un éclairage en textes et en images pour tout comprendre des notions scientifiques qui décrivent les fortes chaleurs que nous subissons à Paris.



# Practical solution sheets



## CASE STUDIES



## KEY CONSIDERATIONS



## COSTS



## SERVICE PROVIDERS, CONTACTS



Install sun protection  
(shutters, blinds, ...)



Pedestrianize and green  
streets with schools



Adjust park opening hours  
during a heatwave

# Information on local financial aid to support your projects

## Aperçu des aides financières locales

Localement, à l'échelle francilienne, il existe de nombreuses aides financières pour aider les acteurs publics et privés à mettre en œuvre des solutions d'adaptation au changement climatique. Ci-dessous, nous vous proposons un aperçu de ces aides qui sera complété et mis à jour régulièrement.

Pour vous aider dans votre recherche d'aides financières pour vos projets, vous pouvez aussi [utiliser l'outil "Aides-territoires"](#) qui référence de nombreuses aides !



Chaleur et froid renouvelables | Ademe IDF et Région IDF

A qui s'adresse cette aide ? Toutes personnes morales (à l'exception de l'État et de ses...)



Installation de récupérateurs d'eau de pluie | Région Île-de-France

A qui s'adresse cette aide ? Collectivités Associations Etablissements publics Acteur assurant...



Installation de fontaines | Région Île-de-France

A qui s'adresse cette aide ? Peuvent bénéficier de cette aide : Collectivités...

## ■ Webinars with key local funders



REPLAY | Les aides locales aux collectivités pour les solutions techniques d'adaptation



REPLAY | Les aides locales aux collectivités sur les solutions d'adaptation fondées sur la nature



# Depaving and greening urban cemeteries



Montreuil Cemetery - © Agence Parisienne du Climat

- Spaces conducive to **biodiversity** – quiet areas with little to no lighting at night + Greening brings **shade and coolness** for cemetery visitors
- In France, chemical pesticides have been **banned** in cemeteries since 2022
- Case study: **Montreuil Cemetery**, gradually greened over 10 years by a team of five city workers:
  - Gradual removal of concrete slabs between graves to allow **grass** to grow
  - **Tree** planting
  - Greening of the perimeter **wall**
  - Adapted maintenance techniques : **mowing** and **pruning**
- AdaptaVille field **visit in April 2024** with 30 professionals to exchange directly with the teams

# Bringing stakeholders together, sharing feedback, and strengthening the sector

- Around 15 events per year
- 700+ participants in 2024
- A wide range of participants: local governments, consultancies, architects, landscape designers, urban planners...
- Spaces for exchange: testimonials, feedback, group work
- Diverse formats: site visits, workshops, conferences, webinars...





# Site visits



Visit of the green cemetery in Montreuil  
(April 2024)



Visit of a school construction site in Rosny-sous-Bois  
(May 2024)



# Participatory workshops



Workshop on climate-adapted greening  
(September 2024)



Workshop on pavement materials  
(December 2023)



# Webinars



Pavements and Climate Change: Choosing the Right Material in the Right Place



Local Financial Support for Municipalities on Nature-Based Adaptation Solutions



# Les Rencontres annuelles: A flagship moment for adaptation stakeholders



- Thematic roundtables
- A forum with around 30 stands



- 350+ participants in 2024
- 5th edition planned for November 2025



# Tailored support for local authorities

## The expertise of the Agence Parisienne du Climat at the service of cities:

- A free, individual, and tailored pathway
- For municipal departments
- 4 cities supported in 2024: Paris, Vanves, Arcueil, and Bagnolet
- Proposed actions:
  - General training on adaptation
  - Awareness sessions on specific topics
  - Organization of a participatory workshop on a particular issue
  - Organization of a urban walk on adaptation



Workshop with Paris staff on summer comfort in public buildings

# Stay in touch

All our resources are available on  
our platform: [adaptaville.fr](https://adaptaville.fr)



Subscribe to our  
newsletter to stay  
informed!





# Merci !



# ADAPTAVILLE



3 rue François Truffaut, Pavillon du Lac  
Parc de Bercy, 75012 Paris  
[www.apc-paris.com](http://www.apc-paris.com)

[in](#) | [@AparisClimat](#)





# Plus Fraiche Ma Ville

*Tanguy de Ferrières*

*The French Agency for  
Ecological Transition*







# Panel discussion

- **Andreas Hoy, SEI Tallinn**
- **Natalia Burgos Cuevas, Ecologic Institute**
- **Anna Blouet, Agence Parisienne du Climat**
- **Tanguy de Ferrières, The French Agency for Ecological Transition**





# Stay in contact!

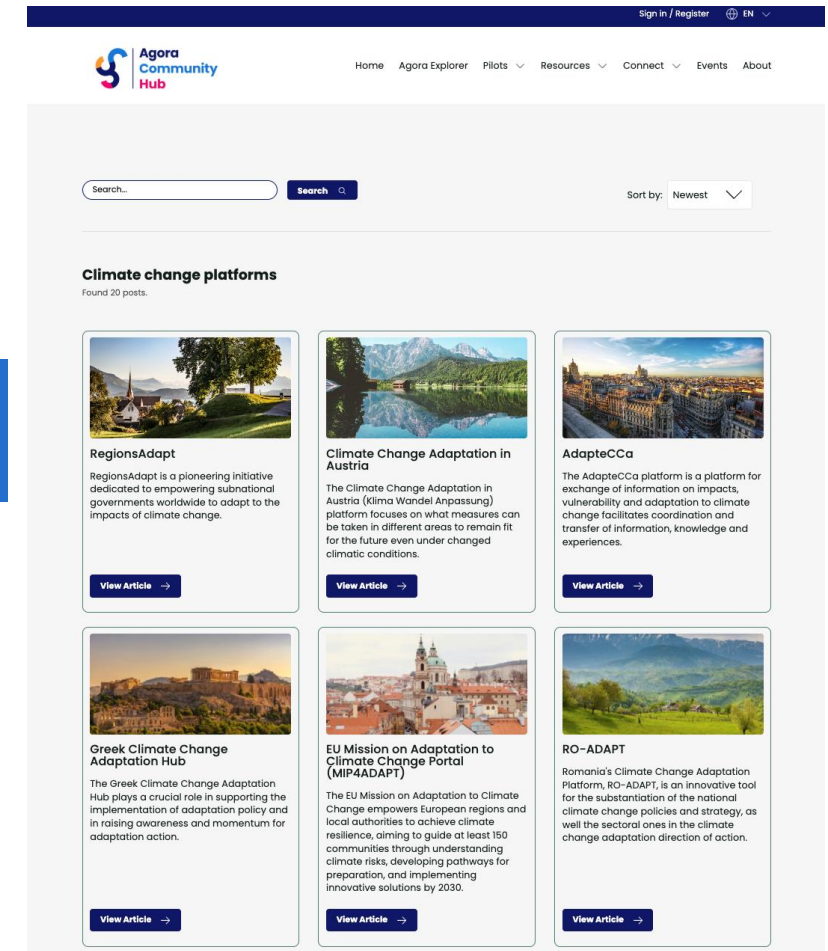
## How would you like to stay in touch?

We are looking at options to ensure this network can remain in contact to support and engage through future webinars and more generally.

**1. Join the current network online!**



**2. Check out our platforms page and add your platform!**





# Stay in contact!

## 3. Check out our other platforms and tools!

Digital Academy to access and use  
climate data and monitor climate  
risks



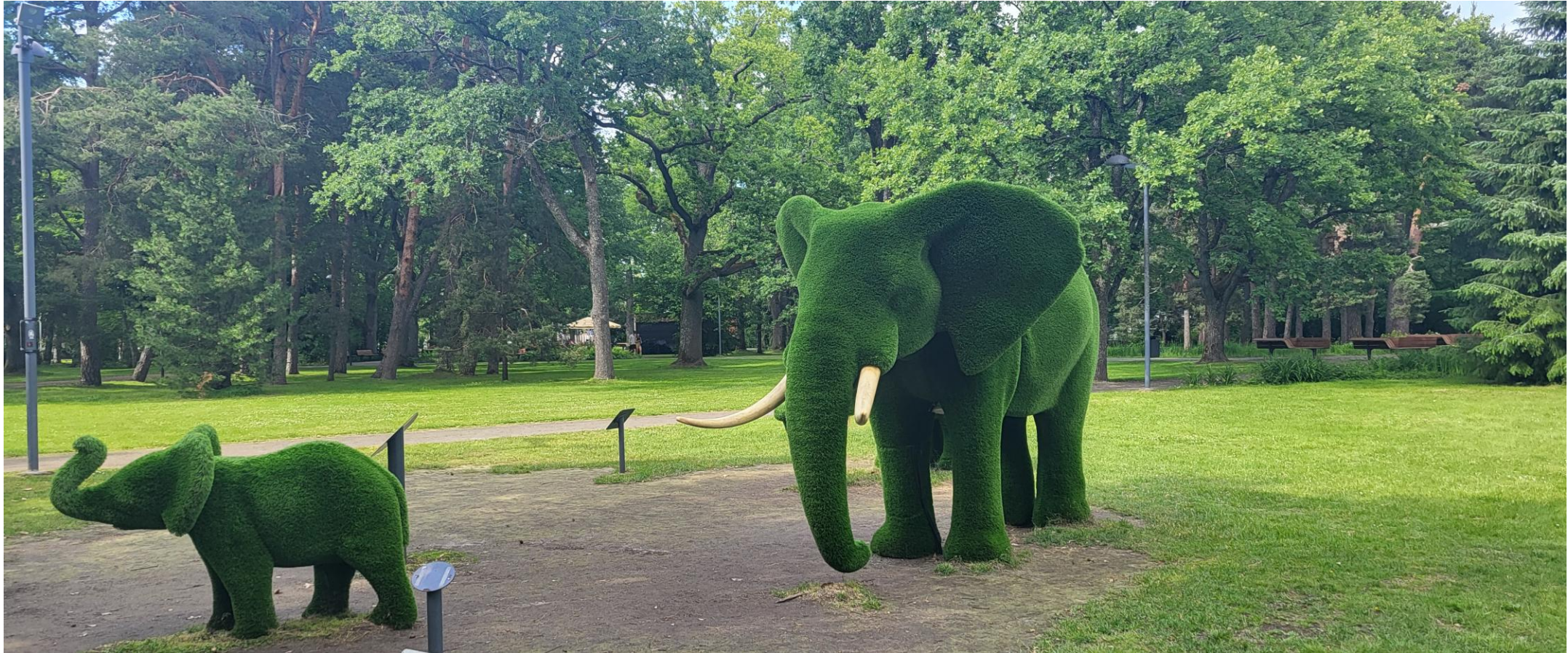
Digital Academy Against  
Climate Change Disinformation



Agora Community Hub



# Thank you for joining today!



**Please stay in touch:**

**Andreas Hoy ([andreas.hoy@sei.org](mailto:andreas.hoy@sei.org)) and Rosie Witton ([rosie.witton@sei.org](mailto:rosie.witton@sei.org))**